

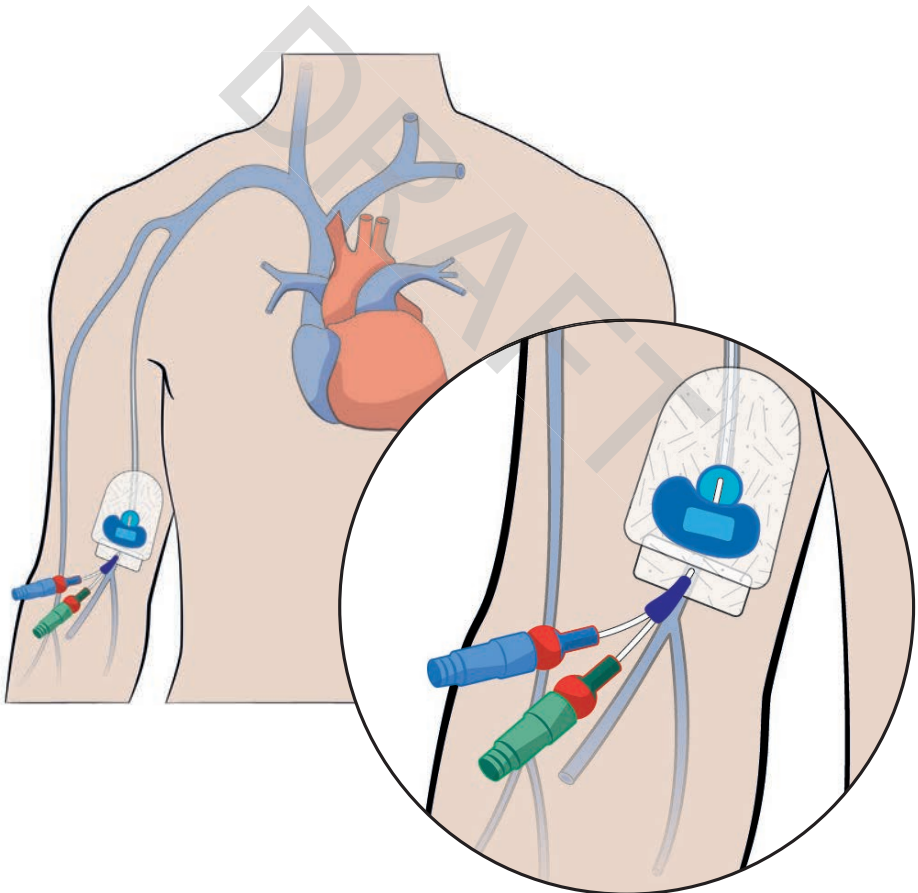
# Outpatient Parenteral Antimicrobial Therapy (OPAT) service

---

Patient information leaflet for  
administration on the Medical  
Daycase Unit (MDCU)

## What is the OPAT service?

It is a team that provides intravenous (IV) antimicrobial therapy on the MDCU for patients who have been assessed and are suitable for this service. The MDCU is a ward that you attend daily for treatment. The antibiotics will be given through a longer cannula (known as a PICC line) that is inserted into your arm prior to being discharged from the hospital. It is intended to be an alternative to receiving treatment in hospital as an inpatient and allows the you to recuperate in your own home.



## Who decides if I can receive antibiotics on the MDCU?

The doctor looking after you on the ward and the doctor in charge of the OPAT service will decide if you can go home and receive your treatment on MDCU. You will need to be medically stable (not needing to be in hospital for any other reason) and not live alone at home - unless you are attending for a short IV antimicrobial infusion.

## What are the benefits?

- Your stay in hospital is shorter
- You can recover from your illness at home, whilst still receiving treatment
- You will have blood tests taken weekly by the nurses when you come in for treatment

## What are the risks?

- Some patients can have allergic reactions to antibiotics but this is rare (see back of leaflet)
- Your PICC line may become blocked and you may need to come back to hospital to have it unblocked by our specialist team
- Infection can sometimes develop in the PICC line

## Who will be giving my IV antibiotics?

Your antibiotics will be given by a nurse on the MDCU who works alongside the OPAT hospital team. They will also take bloods weekly (possibly more frequently if advised by the doctor).

## How long will I receive treatment from the OPAT service?

This will depend upon the infection we are treating. Antibiotic treatment ranges from a few days to several weeks of treatment. Your case will be reviewed by our team once a week, in the OPAT virtual ward round, to check that the treatment is effective and safe.

You will still be under the care of the

that you were under whilst an inpatient and they arrange clinic appointments with you.

## What if I feel unwell at home?

It is rare to experience any problems on this treatment but if you do develop any of the following symptoms or notice your line or the skin around your line does not look right, please call the contact numbers on the back of this leaflet.

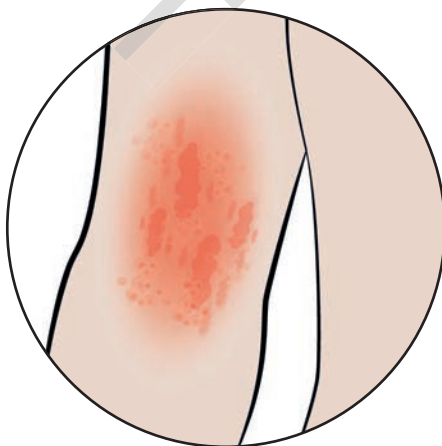
### Symptoms to report to nursing team:

- Rash
- Diarrhoea
- High temperature/ fever
- Blocked PICC line
- Pain swelling redness around the PICC line

If you have an allergic reaction and experience any of the symptoms below call 999

### Symptoms of an allergic reaction:

- Swelling to lips, mouth and tongue
- Difficulty breathing
- Wheezing
- Redness/hives to skin



*Redness/hives to skin*

## Contact numbers

In an emergency please call 999 or attend your nearest Emergency Department.

**To contact the OPAT hospital team:**

**OPAT Co-ordinator** is available between  
8.00am – 4.00pm, Monday to Friday  
(or please leave a message outside of these hours).

**Contact:** 01274 382248

or

**OPAT Nurse Specialist** is available between  
8.00am – 4.00 pm, Monday to Friday  
(or please leave a message outside of these hours).

**Contact:** 07799639693

**Baxter helpline** (company who supply the antibiotics)  
0800 0288 966

## People with hearing and speech difficulties

You can contact us using the Relay UK app. Textphone users will need to dial 18001 before the number to be contacted.

## Accessible Information

If you need this information in another format or language, please ask a member of staff.

## Smoking

Bradford Teaching Hospitals NHS Foundation Trust is a smoke-free organisation. You are not permitted to smoke or use e-cigarettes in any of the hospital buildings or grounds.

DRAFT

Author: Caitlin Edlington  
Date Published: July 2022  
Review Date: July 2024  
MID Ref: 22071102  
Designed by Medical Illustration  
Medical.Illustration@bthft.nhs.uk