

The Bradford Model of Nursing and Midwifery Care

This is me!
Be part of team
Bradford!





The Bradford Model of Nursing and Midwifery Care

The **Bradford Model of Nursing and Midwifery Care** sets out the standards, outcomes and values that define the elements of excellence in nursing and midwifery practice at BTHFT. These support the delivery of the Trust's objectives in relation to Quality, Improvement, People, Partnership, Sustainability and Patient Experience. They also exemplify the Trust's values: **We Care, We Value People, We Are One Team.**



Key

- The underpinning principles of excellent care
- The attributes of nursing and midwifery team members providing excellent care
- The key components of excellent care
- The essential elements of excellent care
- The fundamental aspects of excellent care
- The Trust Values

Trust Objectives



Quality

To provide outstanding care for patients, delivered with kindness



Improvement

To be a continually learning organisation and recognised as leaders in research education and innovation



People

To be one of the best NHS employers, prioritising the health and wellbeing of our people and embracing equality, diversity and inclusion



Partnership

To collaborate effectively with local and regional partners to reduce health inequalities and achieve shared goals



Sustainability

To deliver our financial plan and key performance targets

Foreword – Karen Dawber

It takes a very special type of person to be a nurse or a midwife and we want the very best here in Bradford. At Bradford Teaching Hospitals you will have the investment to reach your full potential and have a lasting and fulfilling career.

After a consultation with staff and our partners, we have developed our very own Bradford Model of Nursing and Midwifery; very simply it describes what the Trust will do for you and also what you can do to provide excellent care to the many thousands of patients we care for each year.

So I ask you, as the Chief Nurse, to consider four very simple points:

- ***Is this you?*** Have you got what it takes to join our team, are you enthusiastic, caring and patient centred?;
- ***This could be you!*** Do you want to work somewhere that from the very start of your career will provide you with education to develop to be your best?;
- ***This is me!*** Know that you can be supported to develop and grow and reach your full potential;
- ***This is you!*** You are a Bradford Nurse or Midwife, excelling in your areas of practice, a patient champion and recognised for what you do.

By taking the first step through the door and joining Bradford Teaching Hospitals you have shown a commitment to our 500,000 strong population and your 2,500 nursing and midwifery colleagues. Let us use this professional practice model to shape the future of nursing and midwifery; join me in making nursing and midwifery in Bradford a national and international exemplar for best practice.



How can the Bradford Model of Nursing and Midwifery care help me?

The Bradford Model of Nursing and Midwifery Care is a professional practice model that sets out the standards, outcomes and values that define the elements of excellence in nursing and midwifery care at Bradford Teaching Hospitals.

It was developed by our nurses, midwives and nursing associates through a period of consultation to identify the elements of excellent care. Following this all registrants were invited to submit entries to design the model itself, which were then voted on. This model was the overwhelming winner.

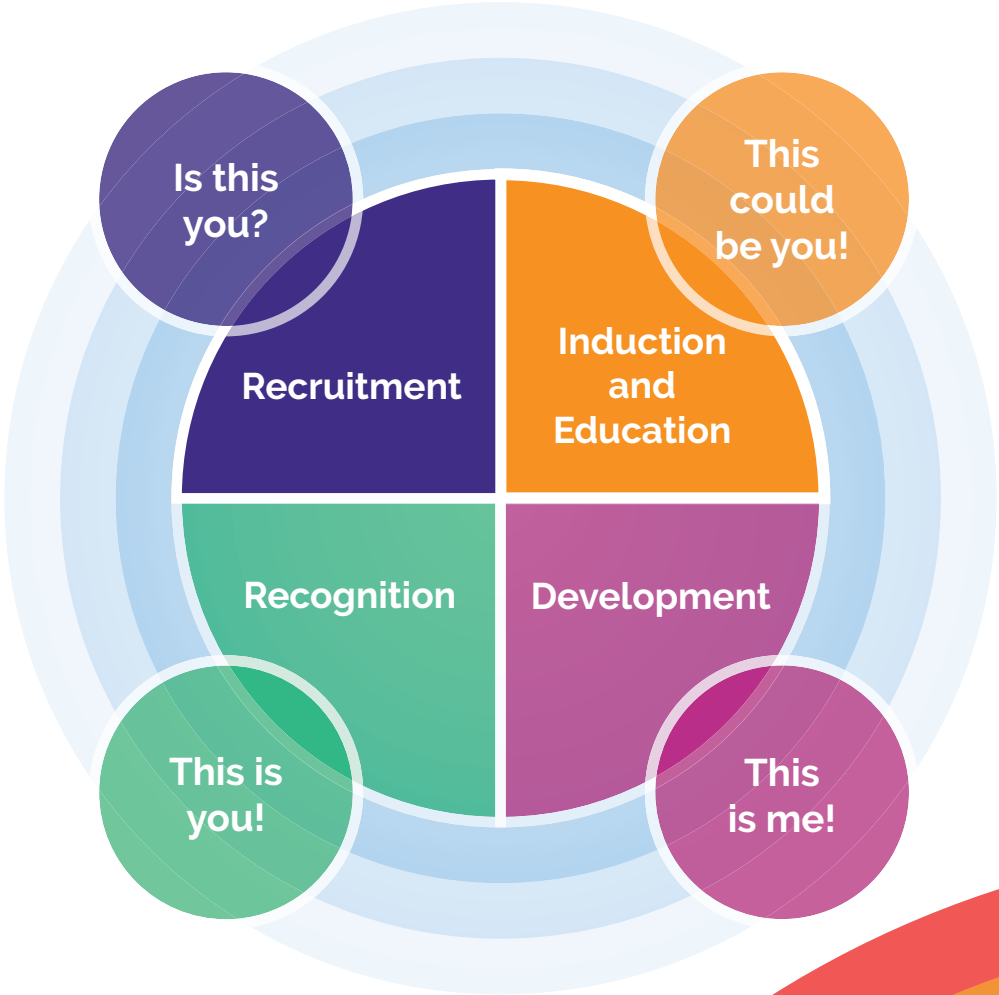
The rainbow was designed to represent the diversity of Bradford, with the tree to signifying the growing of the Trust's objectives across the organisation.

This leaflet has been designed to set out how we will use our model to guide us on our journey to excellence.

If you look at the Bradford Model of Nursing and Midwifery Care and think "This is Me!" wherever you are on your career pathway, you can be confident that being part of team Bradford will help you on your journey to excellence.

The following pages set out how the Bradford Model of Nursing and Midwifery Care will be used in practice.

How is the Bradford Model of Nursing and Midwifery Care used in Practice?



The Bradford Model of Nursing and Midwifery Care Recruitment: **Is this you?**



The Bradford Model of Nursing and Midwifery Care Induction and Education: **This could be you!**

Our Model will be used to help you to develop in your role

It will be included in our 'Jackdaw' training for bank staff

It forms part of our Trust and local induction for all new N&M staff

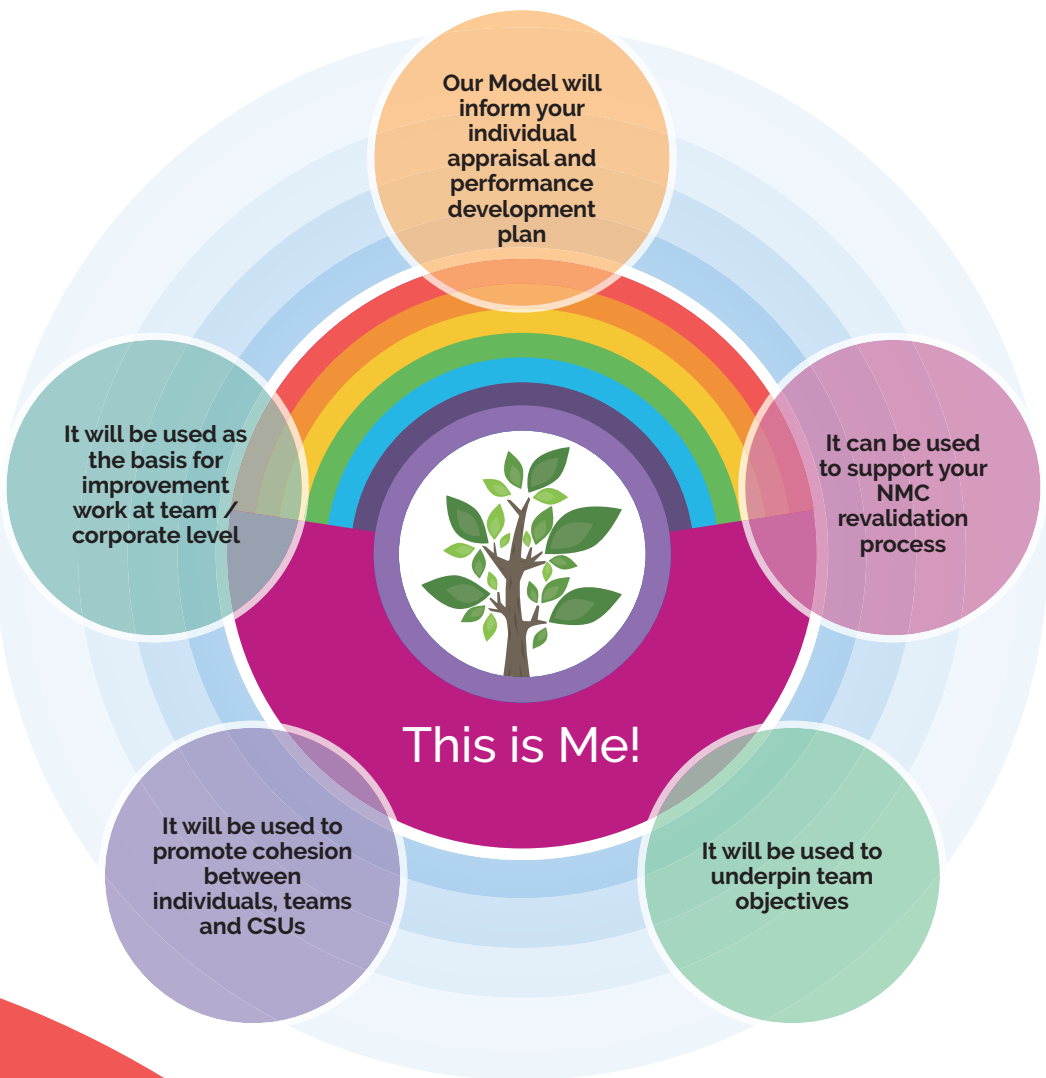
Our logo will be included on educational materials to reinforce our ambition

This could be you!

It will be included in leadership development programmes for Nurses and Midwives

It will underpin relevant nursing and midwifery education sessions

The Bradford Model of Nursing and Midwifery Care Development: **This is Me!**



The Bradford Model of Nursing and Midwifery Care Recognition: **This is You!**





To find out more about how you can be part of our journey to excellence visit the chief nurse team section on the Trust intranet:

- Nursing & Midwifery excellence
 - Nursing and Midwifery Strategy
 - The Bradford Model of N&M care mapped to the NMC code
 - Nursing and Midwifery Councils