

We Are Bradford:

2020/21 in numbers



Bradford Teaching Hospitals
NHS Foundation Trust

Capital Projects

£30.3m

on buildings, equipment and digital programmes including:

£3.6m on building and engineering upgrades and maintenance



£10.5m on our pandemic response (equipment and estates)



£8.8m on IT schemes



£125m total capital spend over the past six years



£5.2m on medical equipment



Donations to our Bradford Hospitals Charity

£900k

money spent, including:



Bradford Hospitals' Charity

£1m money raised

Thank you!



£400,000 patient welfare

£224,000 staff education and welfare



£124,000 medical equipment



Our COVID-19 response

32m+ protective items used, including:



5m masks (13,600 a day at peak)

3.4m aprons (17,000 a day at peak)

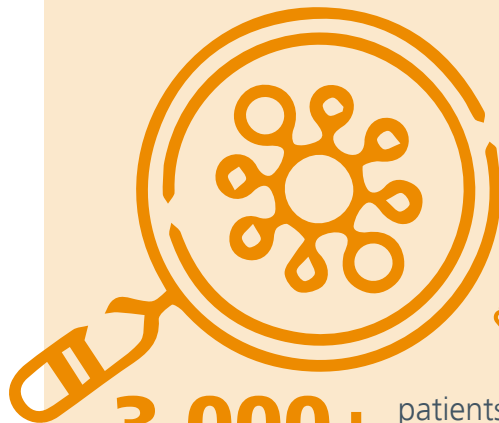
500,000 gowns (1,600 a day at peak)



726 patients successfully recruited to COVID trials



22m gloves (54,000 a day at peak)



3,000+ patients admitted with COVID-19 who recovered and were discharged home



Our Trust year

£494m annual income



530,000 size of population served



41,278 patient and public members

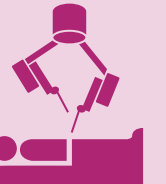
5,700 number of people employed



6 hospital sites managed



4,919 babies delivered



40,070 patients supported by interpreters

359,543 outpatient appointments held



108,513 Emergency Department attendances

51,607 operations performed